

Forbo Flooring Systems is part of the Forbo Group, a global leader in flooring, bonding and movement systems, and offers a full range of flooring products for both commercial and residential markets. High quality linoleum, vinyl, textile, flocked and entrance flooring products combine functionality, colour and design, offering you total flooring solutions for any environment.

Baltic States

Forbo Flooring
K. Ulmana gatve 5
Riga, LV-1004, Latvia
Tel.: +371 670 66 116
Fax.: +371 670 66 117
info.lv@forbo.com
www.forbo-flooring.com

Belgium

Forbo Flooring
't Hofveld 4
1702 Groot-Bijgaarden
Tel.: +32 2 464 10 10
Fax.: +32 2 464 10 11
info.belgium@forbo.com
www.forbo-flooring.be

China English

Forbo Flooring China
6 Floor, Ansheng Business Center
No. 77 Fenyang Road
Shanghai 200031
P. R. China
Tel: 0086 21 6473 4586
Fax: 0086 21 6473 4757
info.cn@forbo.com
www.forbo-flooring.com.cn

Czech & Slovak Republic

Forbo s.r.o.
Novodvorská 994
142 21 Praha 4
Česká republika
Tel.: + 420 239 043 011
Fax.: + 420 239 043 012
info@forbo.cz
www.forbo-flooring.cz

Taiwan/Hong Kong/Macau

Forbo Flooring
Tel.: +852 9039 0708
info.flooring.tw@forbo.com
www.forbo-flooring.com

South East Asia

Forbo Flooring
190 Middle Road, #19-05 Fortune
Centre
Singapore 188979
Singapore
Tel.: + 65 6852 9805
Fax.: + 65 6759 9212
info.flooring.sg@forbo.com
www.forbo-flooring.com

Other countries

Forbo Flooring B.V.
P.O. Box 13
1560 AA Krommenie
The Netherlands
Tel.: +31 75 647 74 77
Fax.: +31 75 647 77 01
contact@forbo.com
www.forbo-flooring.com

Safety. Design. Confidence.



step

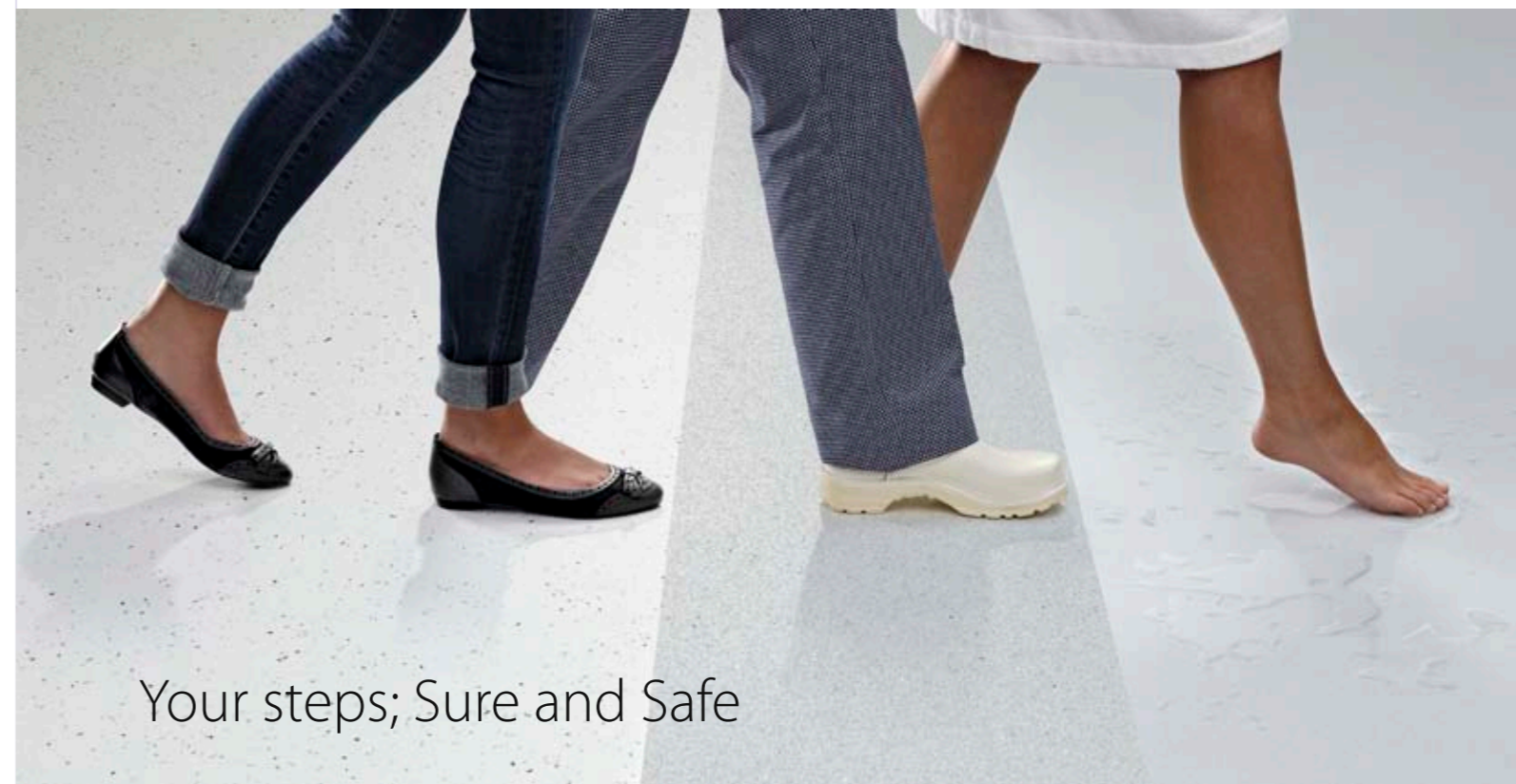
safety vinyl

Safety. Design. Confidence.

Content

Introduction Safety, Design, Confidence	2
Your steps; Sure and Safe	3
Slip resistance explained	4
Step: a versatile performance product	5
Safety flooring classification guide for commercial and industrial areas	6
Surestep- Original & Star	8
Surestep Wood, -Mineral, -Stone & -Texture	10
Safestep R11 & R12	12
Safestep Aqua & Laguna	14
Installation	16
Sustainable vinyl from Forbo Flooring Systems	17
More Forbo vinyl collections	18
More Forbo flooring	19
Service products	20
Technical details Step collection	22

1. Safety vinyl flooring with guaranteed life time slip resistant performance.
2. Offering the widest range in design in safety flooring, without compromising performance.
3. Fit for purpose in both visual and anti-slip performance, a collection that offers 5 individual ranges with solutions for any non-slip specified area.
4. Unique and attractive solutions for wetroom applications, offering the best 'bare foot', as well as 'bare foot / foot wear' non slip solutions providing comfort and security.
5. New, unique and innovative slip resistant "Step Crystals", that provide security and contribute to a clean and fresh design, with proven easier cleaning.
6. A revolutionary new flooring concept optimize for its environmental performance by using recycled content and recycled components in its product build-up.



surestep®

Sustainable R10 slip resistance: all Surestep products, is non-slip particle enhanced and can be applied in all types of general walking areas, where an increased slip risk may occur. Surestep offers lasting performance and keep looking good with easy regular cleaning.

Typical areas;

High traffic areas, corridors, ramps, special areas such as coffee corners, washrooms, toilet, crafts class rooms, public rooms etc..

Collections;

Surestep Original, - Star, - Wood, - Stone, - Mineral and - Texture.

Most relevant Slip resistant norms:

EN13845 / DIN 51130 (R10).

safestep®

Safestep products are applicable in areas where a higher slip risk is identified because of incidental, accidental or continuous active contamination of the floor occurs. In these areas it is simply not possible to prevent spillage, due to the type of work environment. The intensity of the activity identifies the type of product to use.

Typical areas;

Professional kitchens, light industrial food production, florist shops, garden centres.

Collections;

Safestep R11, Safestep R12.

Most relevant Slip resistant norms:

EN13845 and DIN51130 for R-level.

wetroom

Wetroom flooring products are developed for use in continuously wet areas, where water flows frequently and barefoot traffic is the standard; or a combination of barefoot and footwear traffic occurs.

Typical areas;

Shower tray, spa/pool surrounding, changing rooms, locker rooms.

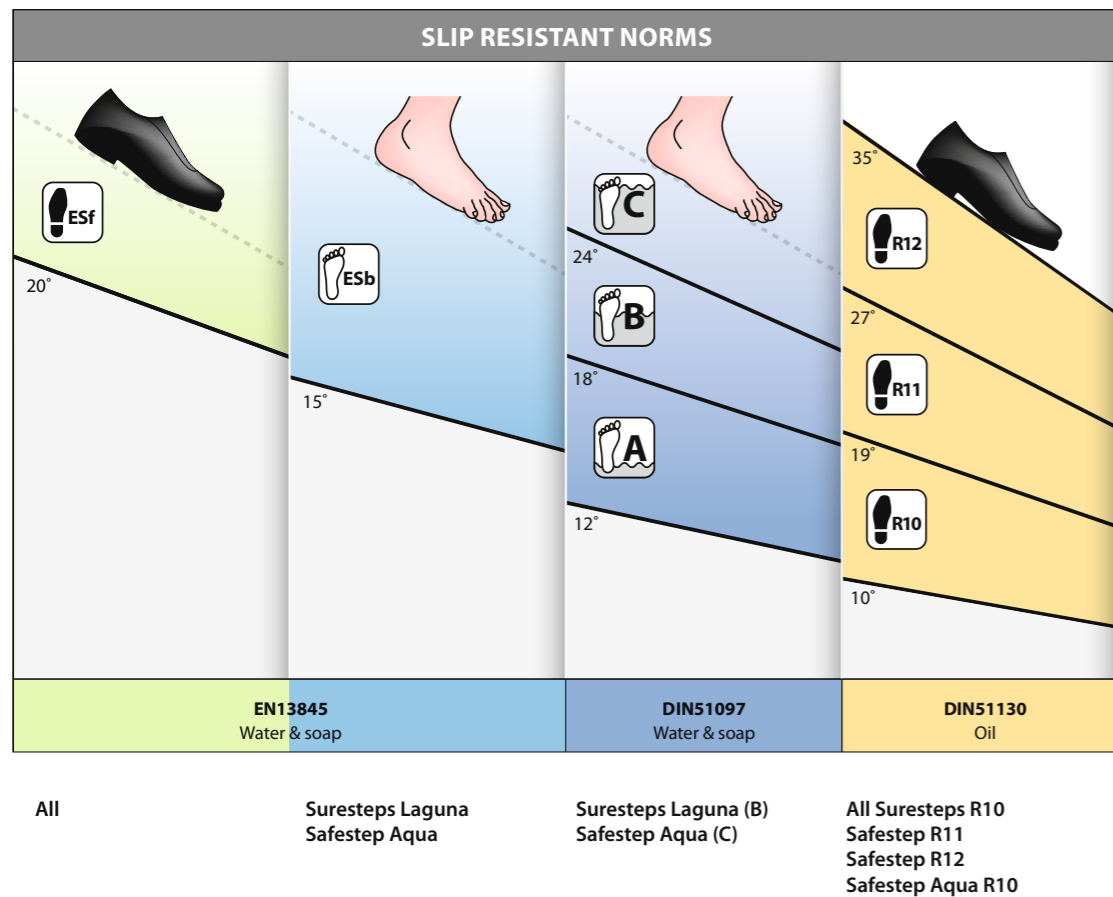
Collections;

Surestep Laguna, Safestep Aqua.

Most relevant Slip resistant norms:

EN13845 and DIN51097 for wet-loaded barefoot use.

Slip resistance explained



A sustainable, lifetime performance as a result of particles throughout the matrix of the product is the requirement to comply with EN 13845. This standard specifies the requirements that must be met to ensure durable slip resistance in varying degrees of usage intensity. All Step floors comply with EN13845.

Floors are often evaluated on slip resistance performance by using the R-scale, which is linked to the Din 51130 standard. Measuring slip resistance on a ramp covered with oil at different angles and thereby resulting in different classes of slip. Step safety flooring is covering the most relevant classes of R10 to R12, in a comprehensive range of products that are use in conditions where footwear is the standard.

For products used in barefoot areas, DIN51097 applies. The testing method is similar to that of the DIN 51130, but this time the product is flooded with a 'soap and water' solutions, a testing method that is more relevant to the barefoot applications. The Step range also offers unique solutions up to the highest class in barefoot safety performance. By choosing the right Step floor for the right application one can prevent the potential for accidents caused by slipping significantly.

Step: a versatile performance product

Forbo's engineered layered construction of all Step products offers the best in heterogeneous product properties delivering optimal performance.

The performance of Step starts with its compact calendered backing that allows high static and dynamic loads and minimizes residual indentation. In addition the backing of our Step products is consisting for 70% out of controlled recycled material, delivering environmental performance as well. The flexible reinforced glass fleece offers optimal dimension stability. For Step the important performance criteria are delivered at the top of the product.

Recycled Step Crystals are present in the upper layer of the product and the PUR protection delivers a silk matt finish that optimizes appearance retention and is guaranteed for warranty lifetime and beyond. Even under high traffic conditions maintenance properties are world class and the beauty of the product is not endangered throughout its life time. PUR finishes are tough and resistant against scratches and offer optimal stain and chemical resistance as required in many applications. Most of the Step products come with a PUR Pearl embossing: a natural matt surface gloss

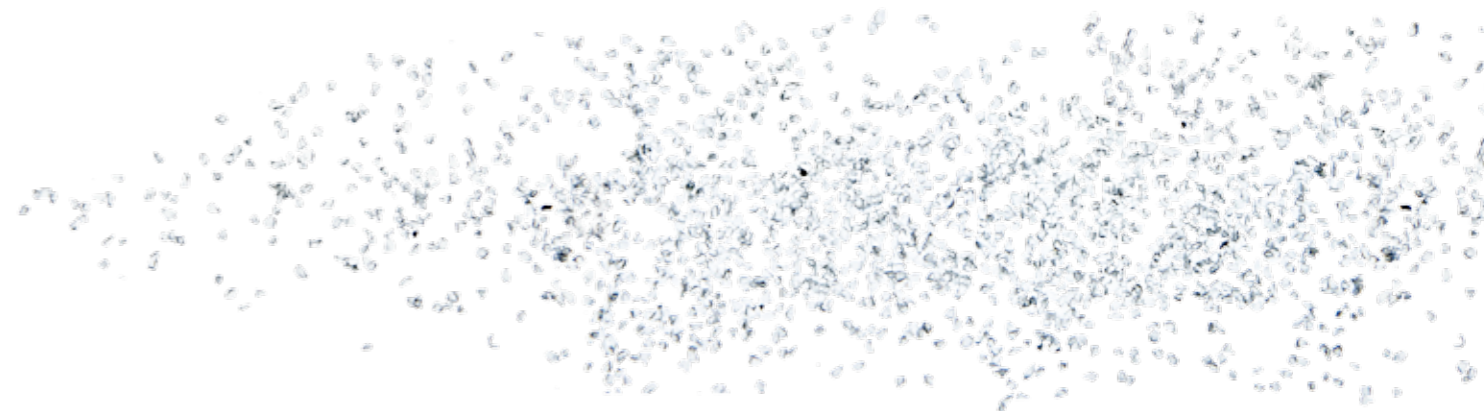
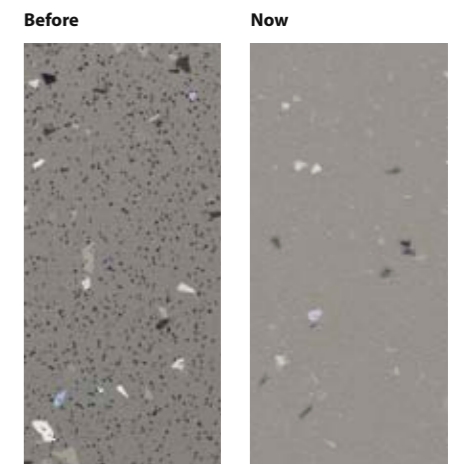
that has a structure which allows easy cleaning and maintenance, dirt and soil repellent on a very high hygienic level. Step Wetroom embossing structures are designed for purpose: organic and hygienic; yet comfortable and attractive. Forbo has designed all Step products to have the cleanest possible visual look, not jeopardizing the functionality of the product. For this purpose the Step Crystals was developed, which is used in many of our designs.

Step Crystals offer a clear design visual and will decrease soiling further due to its small particle size. Step Chrystals also are a sustainable choice since they is made from recycled material. Additional design changes were made to clean up and brighten the particle look of our products (see picture).

Apart from the Surestep Design products, such as Wood, -Stone, -Mineral and -Texture, all are coloured Step products are produced with a pure PVC pigmented top layer.

Step is:

- A suitable, durable slip resistant floor covering...
- that is very easy to clean and maintain...
- with flexible glass fleece reinforcement for superior dimensional stability...
- a matt surface design for natural appearance...
- with a wide range of colours and natural designs for creative solutions...
- that can be combined with other Forbo flooring solutions.



What to use where

Forbo's new Step safety flooring collection provides a complete range of floor covering that are designed to meet safety requirements in a wide range of applications. All products in the Step collection meet and exceed strict Health and Safety Executive (HSE) and European standard requirements.



surestep® R10

General and spillage areas with increased (a higher) slip risk

- General workrooms areas
- Wet cellars in food and beverage production
- Kitchens: thawing, coffee related, hotels and station
- Acceptance for packaged (meat) goods
- Areas for packaged goods
- General storage areas
- Parking areas
- School areas: toilets, kitchens,
- Healthcare: sterilization, sewage, section, wash/bath room
- Wet areas in food and beverage production
- Kitchens, dining rooms
- Outlets, commercial spaces
- Rooms in health / welfare care
- Storerooms
- School and kindergartens
- Operational infrastructure

safestep® R11

Areas with increased slip risk due to accidental or continuous contamination

- Gourmet kitchens up to 100 meals a day
- Community kitchens for meals in public areas
- Cold rooms for packaged goods
- Acceptance and operation of meat products
- Washing machine areas with wet laundry removal
- Food production
- Ceramic industry: wet milling, mixers and presses
- Loading and processing of glass and stone
- Milk processing, cheese production
- Chocolate and Confectionery Manufacturing
- Manufacture of bakery products
- Wet areas in food and beverage production
- Kitchens, dining rooms
- Schools: crafts and woodworking machinery and other specialist rooms
- Cold rooms, freezer rooms, cold stores, freezer houses
- Outlets, commercial spaces
- Rooms in health / welfare care
- Laundry
- Leather production, textiles
- Ceramic industry
- Loading and processing of glass and stone
- Concrete buildings
- Chemical and thermal treatment of iron and metal
- Metalworking, metal processing, metal workshops
- Workshops for vehicle maintenance
- Workshops for the maintenance of aircraft
- Operational infrastructure

safestep® R12

Light industrial usage

- Production and processing of most dairy products
- Manufacturing of bakery and associated products
- Slaughter and meat processing
- Vegetable processing
- Gourmet kitchens over 100 meals a day
- Cold rooms for unpackaged goods
- Paint shops with wet grinding
- Ceramic industry: casting and glazing area
- Wastewater treatment plants
- Next to outdoor loading and oblique ramps, fueling areas
- Manufacture of margarine, edible fats and oil
- Milk processing, cheese production
- Chocolate and Confectionery Manufacturing
- Slaughter and meat processing
- Kitchens, dining rooms
- Cold rooms, freezer rooms, cold stores, freezer houses
- Outlets, commercial spaces
- Leather production, textiles
- Paint shops
- Ceramic industry
- Storerooms
- Chemical treatment of iron and metal
- Metalworking, metal processing, metal workshops
- Workshops for vehicle maintenance
- Wastewater treatment plants
- Fire brigade
- Operational infrastructure

surestep® laguna

Wetroom areas, predominantly barefoot use, but also accessed by footwear

- Continuously wet areas, mainly barefoot but also footwear
- Changing rooms in combination with footwear
- Bathrooms in combination with footwear

safestep® aqua

Spa's, showers and swimming pool areas

- Continuously wet areas, barefoot and soft shoes
- Walk in showers
- Hydrotherapy areas
- Indoor swimming pool

surestep® original

Surestep Original

The fresher looking alternative to the conventional safety flooring visual, hardwearing 100% PVC wearlayer. Improved cleaner, brighter visual. A palette of 24 colours, build up in coordinated colour gradations of saturation/hue/lightness.

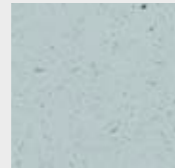
R10, ESf, TRRL≥36, Rz≥20



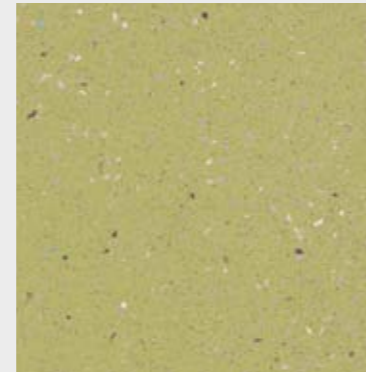
171422 trout

171032 smoke

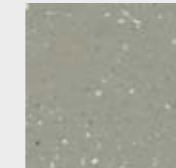
171442 jade



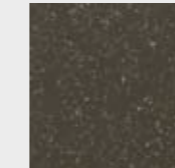
171302 pale



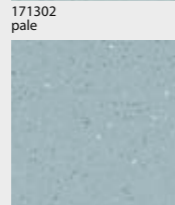
171842 pistachio



171442 jade



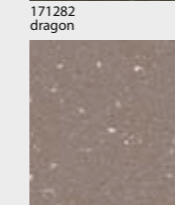
171282 dragon



171712 sky



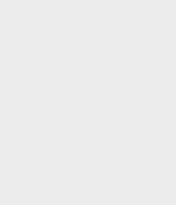
171952 elephant



171812 taupe



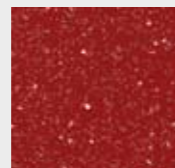
171842 pistachio



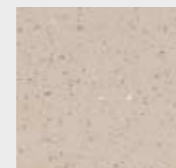
171262 umber



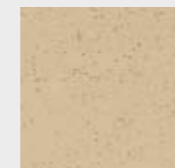
171362 clay



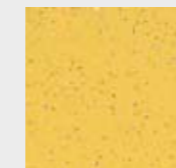
171562 pepper



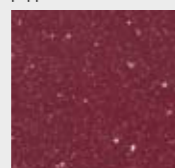
171512 oyster



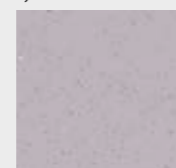
171222 dune



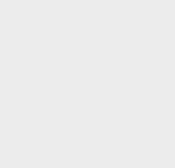
171532 sun



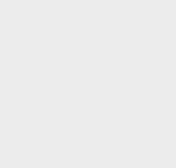
171602 plum



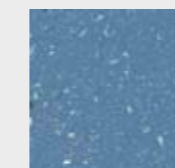
171332 violet



171732 storm



171962 steel



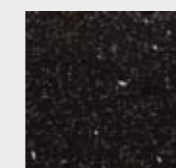
171642 cloudy



171782 right

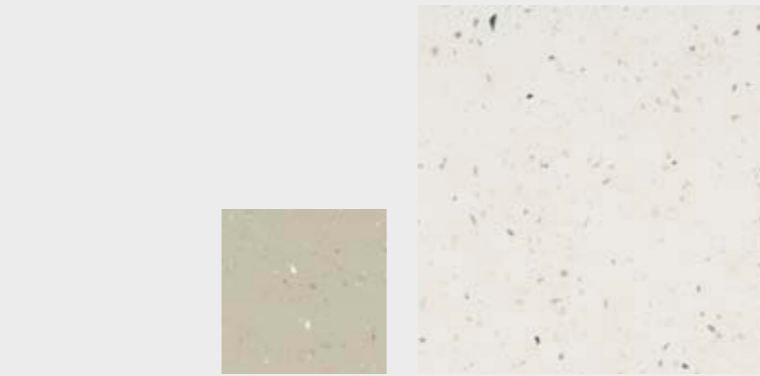


171992 charcoal



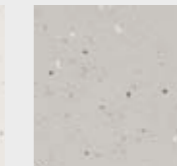
171782 right

surestep® star



176362 clay

176082 snow



176032 smoke



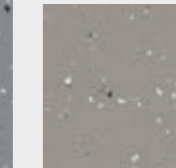
176422 trout



176082 | 176072 snow pewter



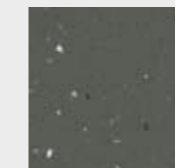
176072 pewter



176922 concrete



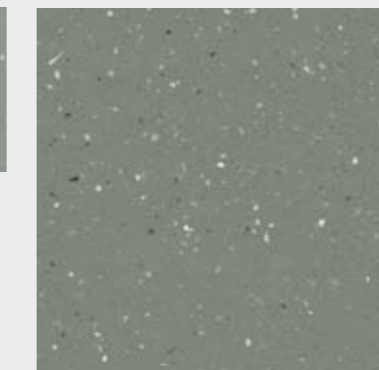
176262 umber



176952 mercury



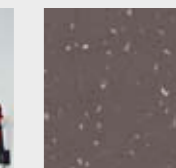
176692 mouse



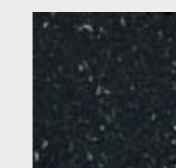
176412 forest



176412 forest



176272 raisin



176982 carbon



176282 dragon

surestep[®] wood | stone | mineral | texture

Surestep Wood

Natural designs, realistic and close to nature, for areas with a warm ambience. The popular Wood designs are continuing, but all have a clear and sharp wood visual with the practically invisible 'Step Crystals' for slip resistance. Amongst the additions are abstract woods, all-over designs for both very small (pantry) and larger applications. Matching with other Forbo wood or stone designs in sheet or plank/tile formats

Surestep wood decibel

All colourways are also available as Surestep Wood Decibel on request which offers 17db impact sound reduction. A combination of classical woods which also have a non-slip equivalent for adjacent areas.

R10, ESf, TRRL≥36, Rz≥20.

Surestep Stone

True to life stone floor designs with a modern look, for contemporary areas. Both in a series of concrete design and in a black and white granite all-over stone variety. A range with a hard and solid appearance, in straightforward colours, dark & light, warm & cool .enriched by both carborundum or Step Crystals particles for realistic visuals.

R10, ESf, TRRL≥36, Rz≥20

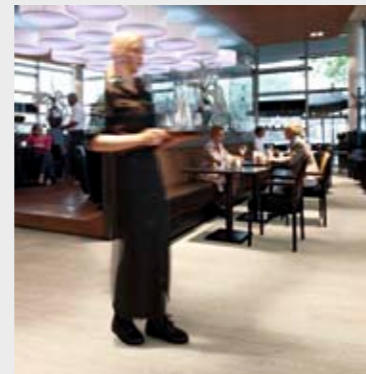
Surestep Mineral

A unique mineral design; a small speckle with a monumental gesture for large areas. A unique new trend of focused design with a unique look The chips in the transparent wear layer create depth and adds refinement to the floor.

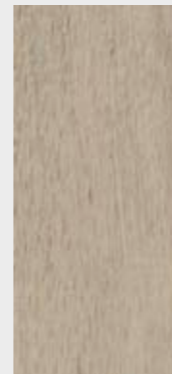
Surestep Texture

A trendy focused design with a subtle textile impression, for a soft and elegant look & feel. A textured embossing enhances the tactility and the gentle look of the visual. Both; in a natural colour range. With Step Crystals, to have a not so obtrusive, non compromise safety floor.

R10, ESf, TRRL≥36, Rz≥20.



18802 elegant oak



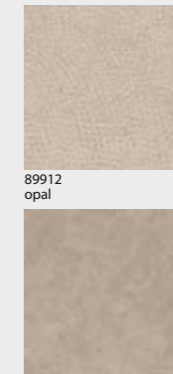
18802 elegant oak



18362 chestnut



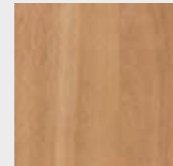
89922 cloud



89912 opal



17112 sand concrete



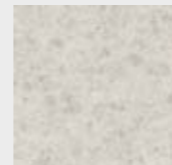
18462 middle beech



18242 sunny beech



18662 pear



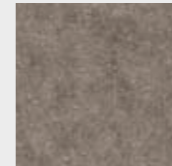
17092 white granite



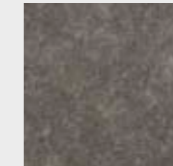
89922 cloud



89932 sepia



17142 warm concrete



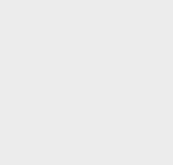
17162 grey concrete



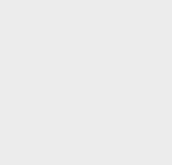
17112 sand concrete



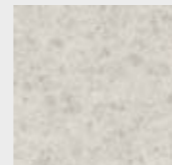
17122 cool concrete



89022 cotton



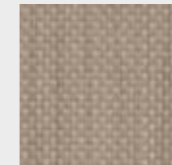
89032 linnen



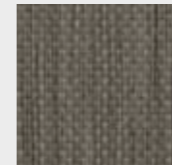
89082 felt



89952 grape



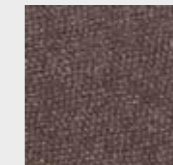
89982 shadow



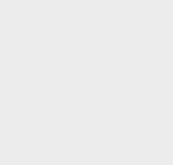
17132 blue concrete



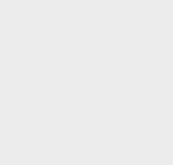
17122 cool concrete



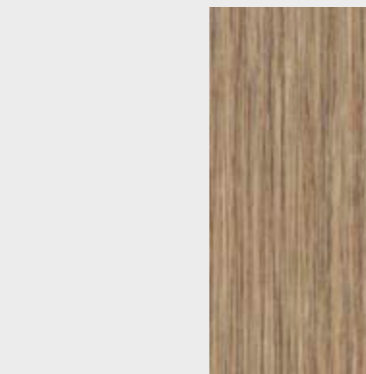
89952 grape



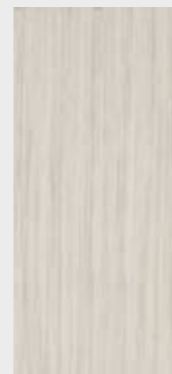
17072 anthracite granite



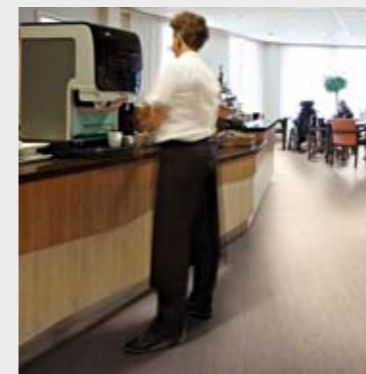
18572 black seagrass



18552 natural seagrass



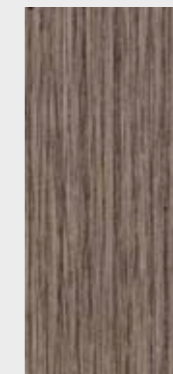
18542 white seagrass



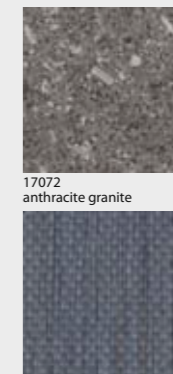
89012 leather



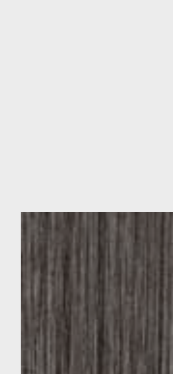
89012 leather



18562 grey seagrass



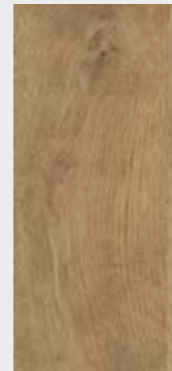
89092 indigo



18572 black seagrass



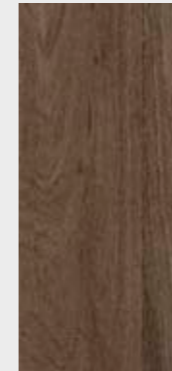
18942 natural oak



18942 natural oak



18932 rustic oak



18792 dark oak



18562 grey seagrass



17172 black concrete

safestep® R11

Safestep R11

A range of 8 colours, matching the target applications - including professional kitchens - for hygienic and clean appearance. All available R11 colours match with a Surestep collection item. Like with Original, and compared with other non-slip collections, the amount of black particles is reduced to realize a friendlier floor visually. A combination of high slip resistance and high hygienic standards, ideal for areas with a higher need general need for enhanced slip resistance. Safe and long lasting, and with PUR Pearl™ coating for easy cleaning and maintenance. Available in 8 colours.

R11, ESf, TRRL≥40, Rz≥45

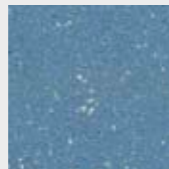
Safestep R12

A range of 4 colours, matching the application in light industrial areas. A soil hiding colour range. All colours match with a Surestep item and with Safestep R11. Long lasting, high slip resistant R12 rated floor ensures slip resistance under even the most extreme conditions.

R12, ESf, TRRL≥50, Rz≥60



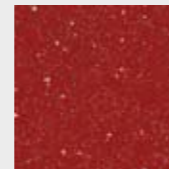
174642 cloudy



174642 cloudy



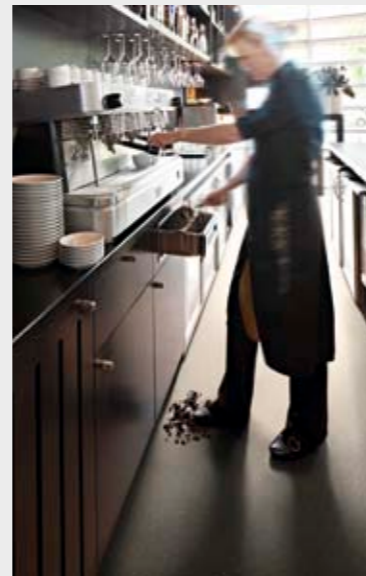
174962 steel



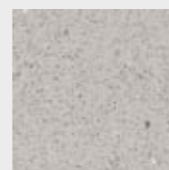
174562 pepper



174992 charcoal



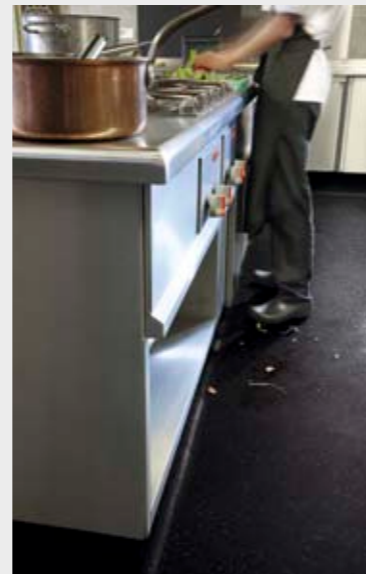
174262 umber



174032 smoke



174952 elephant



174992 charcoal

safestep® R12

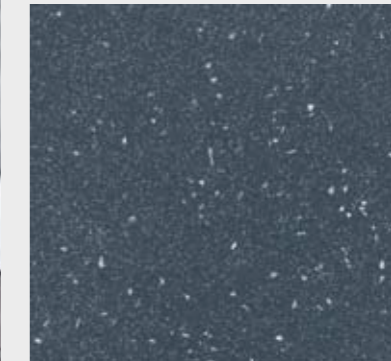


175032 smoke

175032 smoke



175952 elephant



175962 steel



175992 charcoal

safestep[®] aqua

Innovation in wetroom flooring. Forbo at its best when combining functionality with design. Both products coming in a fresh, contemporary and suitable for application colour scheme.

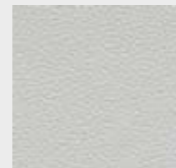
Safestep Aqua

This modern, organic design with a new and unique embossing shape is designed for barefoot (and soft soled shoes) areas. A flexible product, that can easily be installed to the specific requirements of these areas; but most importantly will perform on the highest barefoot class. The clean and modern collection content fits the hygienic and sensitive requirements of the application areas, like bathrooms and swimming pool areas.

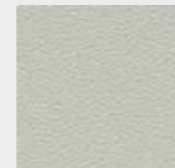
Class B, R10, ESf + ESb, TRRL≥36, Rz≥20.



180012 misty



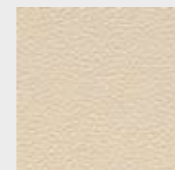
180262 trout



180152 smoke



180292 pale



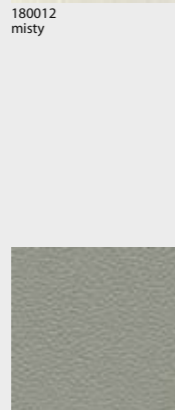
180182 tender

180012 misty

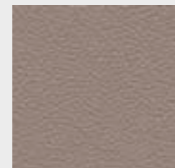
Surestep Laguna

This product combines barefoot and footwear slip resistance, for areas where both are likely and frequently will take place. Complying to the relevant norms for both products it can cover all transition areas, like changing rooms and circulation areas. The subtle, soil hiding particle is integrated in the visual, offering a clean and fresh look.

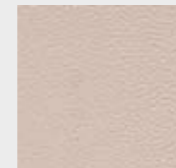
Class C, R10, ESb, TRRL≥36, Rz≥20.



180322 jade



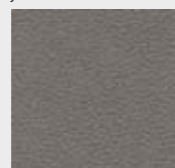
180232 taupe



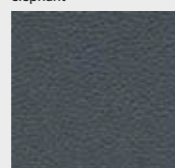
180202 oyster



180052 slateblue



180092 elephant



180352 steel

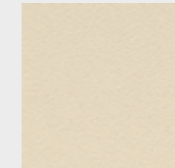


180122 charcoal

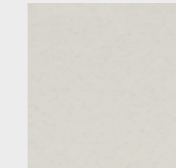


180052 slateblue | 181262 trout | 180352 steel

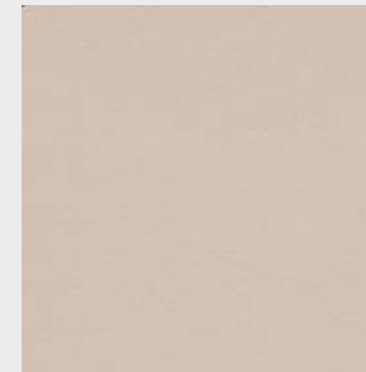
surestep[®] laguna



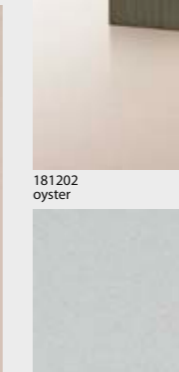
181182 tender



181012 misty



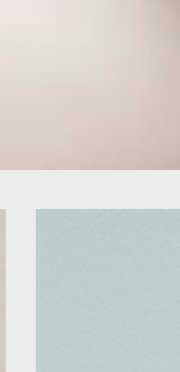
181202 oyster



181262 trout



181152 smoke



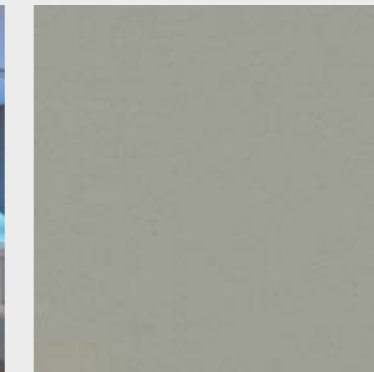
181292 pale



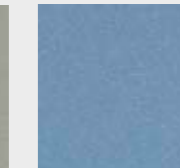
181202 oyster



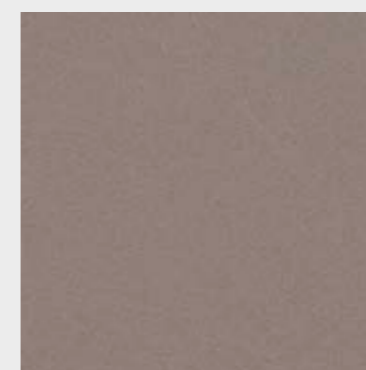
181232 taupe



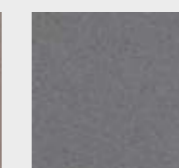
18132 jade



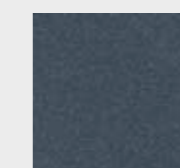
181052 slateblue



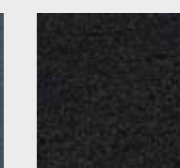
181232 taupe



181092 elephant



181352 steel



181122 charcoal

Step FloorCare

The Forbo Surestep slip resistant vinyl collections are easy to clean and maintain, thanks to their highly durable PUR pearl and PUR coated surfaces.

surestep®

Cleaning after installation

Remove all debris, dirt and dust off the floor and clean the floor with a neutral floor cleaner. For larger areas a scrubber dryer or a rotary machine with a suitable cleaning pad may be used. Pick up dirty water with a wiper and mop or wet vacuum, rinse with clean water and allow floor to dry.

Regular cleaning

Wipe with a dust mop and dust cloth, or vacuum the floor. Remove spots with a damp mop. Spray clean with a rotary machine and a buffing pad, use spray where necessary.

Occasional maintenance

Scrub with cleaner, a rotary machine and a scrub pad. Pick up dirty water with a wiper and mop or a water vac. Rinse with clean water and a mop. Allow the floor to dry.



safestep® R11, safestep® R12, safestep® aqua, surestep® laguna

Cleaning after installation

Remove all debris, dirt and dust off the floor. Vacuum clean and/or sweep the floor thoroughly then scrub with a neutral detergent. For larger areas a scrubber drier or rotary machine with a suitable brush or a cylindrical brush machine e.g. Rotowash/Multiwash, will be most effective. Pick up dirty water with wiper and mop or wet vacuum, rinse and allow floor to dry.

Regular cleaning

Vacuum or sweep the floor to remove loose dirt and dust. Manual Cleaning – Scrub with a neutral detergent (ph7-8) and a scrubbing brush. Remove dirty water with a wiper and mop. Machine Cleaning - A combined scrubber drier or rotary machine with a suitable brush or a cylindrical brush machine e.g. Rotowash/Multiwash, will produce best results on larger areas. If the floor is heavily soiled, a stronger detergent with a ph of around 10 can be used. Rinse well afterwards with clean water.

Periodic cleaning

Clean the floor periodically using the manual or machine methods above. Clean heavily soiled areas with a concentrated cleaning solution, which should be allowed to soak on the floor for a few minutes before scrubbing. Rinse well with clean water afterwards. High pressure cleaning is an alternative method to scrubbing provided the excess water can be dealt with.

N.B. Do not use seals or polishes on Step Ranges as the slip resistant properties could be reduced.

For more information: www.forbo-flooring.com.

Step Installation



Coving

Covings are used to cover the transition between horizontal and vertical parts, by installing a strip of flooring material over a cove former profile. When applying covings always use pressure sensitive (contact) adhesive for installation of both the cove former and the strip and ensure that the material is firmly pressed into position. Check the adhesive instructions for detailed information. For vinyl, the horizontal and vertical seams can be sealed by hot welding.



New spickeld hiding Welding rods

Matching welding rods are developed for each collection item. All welding rods are subject of the Vinylweld hierarchy and might be applicable for multiple floor items. 10 new colours in the spickeld rod

Seams in vinyl and linoleum can be made impervious by using the hot welding technique. Use the relevant weld rod for the flooring material i.e. vinyl or linoleum. The seams in the flooring material are routed out, usually 2/3 of the total thickness. After thorough cleaning, the weld is made using the hot air gun and special nozzle available to perform the task properly. Finally weld is trimmed off in two stages. First, trim off the excess material using a quarter moon knife and seam sledge. After the weld has completely cooled down, the final trimming should be performed with the quarter moon knife only. For straight angles in vinyl, a special triangular welding rod is available. This type also requires routing before welding, but nail trimming of the welded seam may be skipped. Always follow the instructions, provided with the weld rod.



Installation advise

On the backing of Step there is an imprint, showing the direction of production and advice on the installation direction. Installation direction is also found on the roll label.

• All over designs: reverse installation

Surestep – Original, Star, Stone, Mineral, Laguna
Safestep – R11, R12, Aqua

• Directional designs: install in one direction

Surestep – Wood, Texture

Adhesives

Adhesive advice for compact (and acoustic) sheet vinyl installation is:

- 540 Eurosafe Special
- Solvent free; project vinyl specific
- 640 Eurostar Special
- Solvent free; Low Emission EC1
- Locally, the adhesive advice can differ, due to supplier agreements.

For more information about Service Products and System Solutions contact your sales office or visit the website

www.forbo-flooring.com

Drains

- Use floor drains with clamping covers
- Minimum fall to drains in wetrooms 1%
- Drains > 30cm from the wall
- Some regulations allow 15 cm but more makes installation easier



More Forbo flooring



allura



eternal



marmoleum



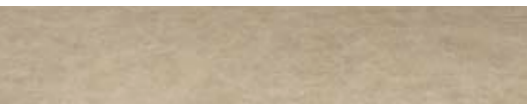
entrance flooring



flotex



tessera



Allura Luxury Vinyl Tile

The all new Forbo Allura collection presents the ultimate finesse in realistic natural and abstract designs that have been created with state of the art production techniques and processes to create the most realistic and natural material expression in luxury vinyl tiles. Available in 5 individual collections, from glue down to loose lay and click systems.



Eternal

Eternal is Forbo's general purpose Project vinyl offer. Within our Eternal general purpose project vinyl collection you'll discover a combination of state of the art designs in a strong durable, fit for purpose range – whatever your application. The collection presents a balanced range of wood-, stone-, and abstract designs, alongside with a comprehensive modern colour palette that complements your interior design.



Marmoleum

As the world market leader in Linoleum flooring solutions, Forbo offers a huge range in natural linoleum floor coverings as well as surface linoleum for furniture and wall covering. Over a 100 years of experience and modern manufacturing techniques today create the most durable and sustainable resilient floor covering available. Made from linseed oil, rosin, wood flour and limestone, linoleum is a truly natural product that can be applied a in wide range of commercial and residential environments.



Entrance flooring

Creating better environments starts at the entrance of any building. To avoid water, sand, mud and gravel being carried into the building a proper entrance floor is a good line of defense. Coral entrance floors are created to absorb moisture and scrape dirt of shoes and wheel that find their way into a building. Entrance floors can reduce cleaning and maintenance costs and give the floors inside the building their optimum appearance retention.



Flotex Flocked flooring

Flotex floor coverings are high tech textiles which are characterized by the fact that they combine comfort and warmth underfoot with excellent properties for cleaning and hygiene. The dense nylon 6.6. fibre surface (over 70 million per square metre) creates a hard wearing and extremely durable floor that withstands high traffic and heavy loads. The Flotex designs come in a great variety of colourways. Digital printing assures both bright and natural colour tones with which an infinite number of designs and collections can be created.



Tessera

Forbo offers a wide range of contemporary high quality tufted loop-, cut&loop- and cutpile carpet tiles for office and leisure environments. With over 20 ranges the offer covers a wide spectrum of design, price and quality that can match any competitive offer.

Sustainable safety vinyl from Forbo Flooring

With the focus on LCA improvement, the key developments for the new Step collection can be summarised as follows:

- Internal recycling of production waste (until now waste is recycled by an external partner) from safety products
- Increased recycled content in the backing layer; from 39% to 60%
- Overall improvements by using Step Crystals: a recycled by-product, lower energy to produce, resulting in clearer visual and less soiling: therefore less water usage for cleaning in use phase

All other Forbo's sustainable usp's remain;

- Better for the Indoor air quality; AgBB compliant and TVOC < 250 µg/m³
- Compliant + to the REACH substances list
- Produced with 100% green electricity
- Water based inks used in printed designs
- Low requirements for cleaning and maintenance, reduced water and detergent use
- Forbo Spray method suitable for all R10 products, 100% biodegradable, no chlorine, pH neutral
- a 100% recyclable product



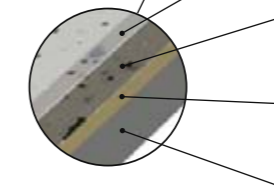
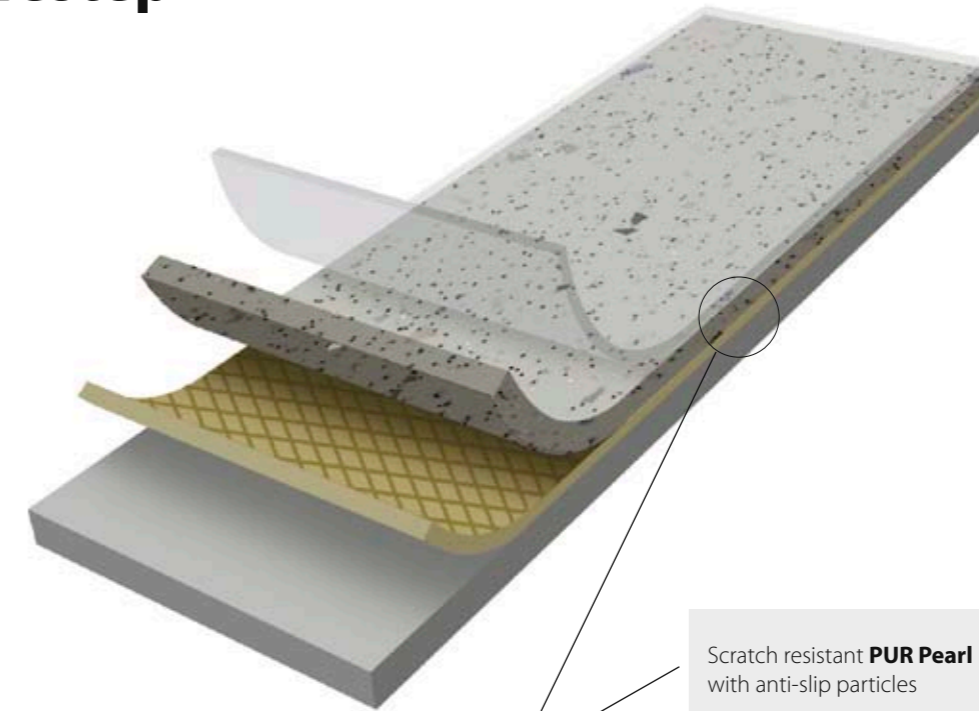
Technical specifications

Step meets the requirements of EN - ISO 10582 & EN 13845

		Surestep Original Surestep Star	Surestep Wood Surestep Stone Surestep Mineral Surestep Texture	Safestep R11	Safestep R12	Safestep Aqua	Surestep Laguna
Total Thickness	EN - ISO 24346	2.0 mm	2.0 mm	2.0 mm	2.0 mm	2.0 mm	2.0 mm
Thickness wear layer	EN - ISO 24340	0.7 mm	0.7 mm	0.7 mm	0.7 mm	0.7 mm	0.7 mm
Commercial very heavy	EN - ISO 10874	Class 34	Class 34	Class 34	Class 34	Class 34	Class 34
Light industrial	EN - ISO 10874	Class 43	Class 43	Class 43	Class 43	Class 43	Class 43
Collection size		24 - 13	12 - 8 - 5 - 5	8	4	12	12
Roll Width	EN - ISO 24341	2.00 m	2.00 m	2.00 m	2.00 m	2.00 m	2.00 m
Roll Length	EN - ISO 24341	20 - 27 m	20 - 27 m	20 - 27 m	20 - 27 m	20 - 27 m	20 - 27 m
Total Weight	EN - ISO 23997	2.75 kg/m ²	2.75 kg/m ²	2.75 kg/m ²	2.75 kg/m ²	2.75 kg/m ²	2.75 kg/m ²
Dimension Stability	EN - ISO 23999	< 0.1%	< 0.1%	< 0.1%	< 0.1%	< 0.1%	< 0.1%
Residual Indentation	EN - ISO 24343-1	≤ 0.05 mm	≤ 0.05 mm	≤ 0.05 mm	≤ 0.05 mm	≤ 0.05 mm	≤ 0.05 mm
Castor Chair	EN 425	No effect	No effect	No effect	No effect	No effect	No effect
Use in Wet areas	EN 13533	Yes	No	Yes	Yes	Yes	Yes
Light fastness	EN - ISO 105 B-02	≥6	≥6	≥6	≥6	≥6	≥6
Flexibility	EN - ISO 24344	ø 10mm	ø 10mm	ø 10mm	ø 10mm	ø 10mm	ø 10mm
Slip resistance	EN 13845 Annex C	ESf	ESf	ESf	ESf	ESb	ESb / ESf
	EN 13845 Annex D 50,000 revolutions <10% loss	Class 34/43	Class 34/43	Class 34/43	Class 34/43	Class 34/43	Class 34/43
	DIN 51130	R10	R10	R11	R12	R10	R10
	Din 51097					Class C	Class B
Chemical resistance	EN-ISO 26987	Very Good	Very Good	Very Good	Very Good	Very Good	Very Good
Electrical resistance	EN 1081 (R1)	> 1.10 ⁹ Ω	> 1.10 ⁹ Ω	> 1.10 ⁹ Ω	> 1.10 ⁹ Ω	> 1.10 ⁹ Ω	> 1.10 ⁹ Ω
EN 14041 							
Step meets the requirements of EN 14041							
Reaction to fire	EN 13501-1	B _f -s1	B _f -s1	B _f -s1	B _f -s1	B _f -s1	B _f -s1
Body Voltage	EN 1815	< 2kV	< 2kV	< 2kV	< 2kV	< 2kV	< 2kV
Thermal Conductivity	EN 12524	0.25 W/m.K	0.25 W/m.K	0.25 W/m.K	0.25 W/m.K	0.25 W/m.K	0.25 W/m.K
Slip resistance	EN 13893	DS: ≥0.30	DS: ≥0.30	DS: ≥0.30	DS: ≥0.30	DS: ≥0.30	DS: ≥0.30

surestep®
safestep®

Construction



Scratch resistant **PUR Pearl** with anti-slip particles

Glass fleece for dimensional stability

Clear and coloured wearlayer with anti-slip particles

Compact backing with 60% recycled content

Benefits

A durable floor covering combining outstanding slip resistance (up to R12) with a wide range of design possibilities. The PUR Pearl surface provides superior, long-lasting appearance and performance.

- R10, R11 and R12 in anti slip enhanced performance
- Most products with PUR Pearl lacquered surface providing easy cleaning and maintenance
- Low gloss surface for low scuff and a natural look

- Transparent or coloured durable wear layer for a long-lasting appearance
- High recycled PVC content
- Wide design variety
- Optional with or without felt backing for better adhesion properties.